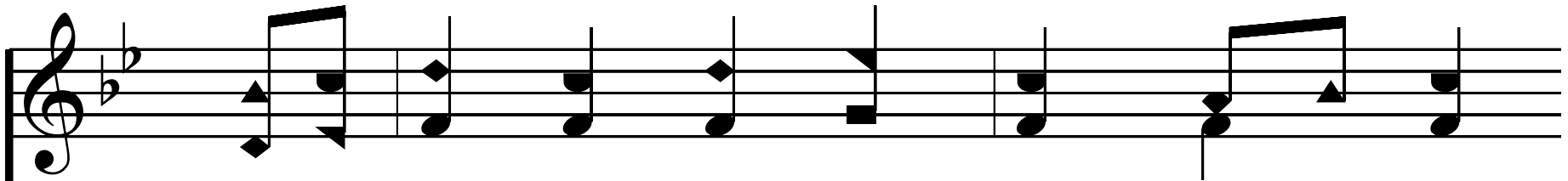


1. I sing the might - y pow'r of God,

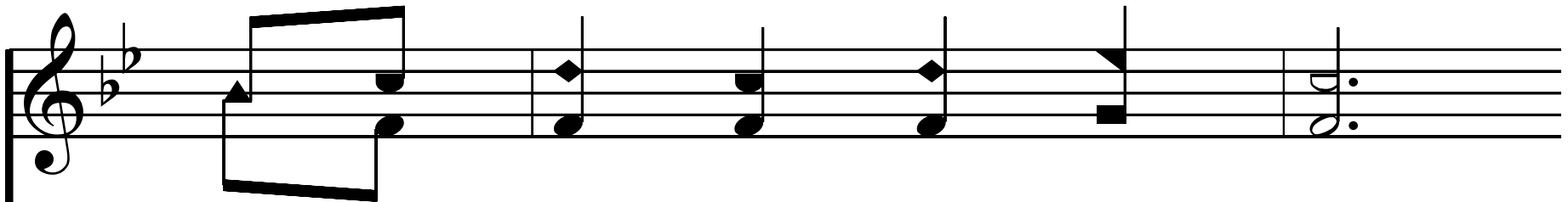
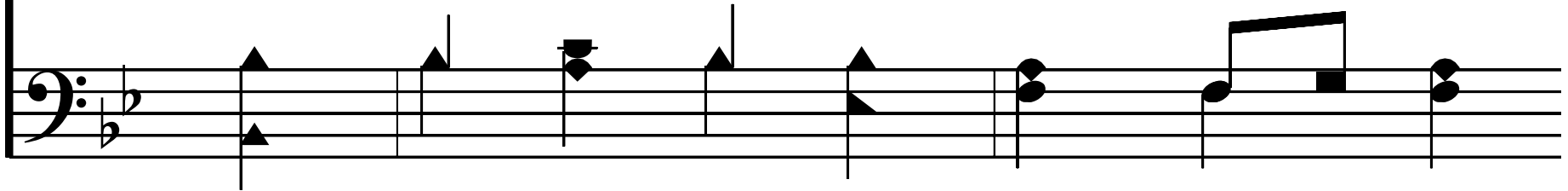
That made the moun - tains rise;

That spread the flow - ing seas a - broad,

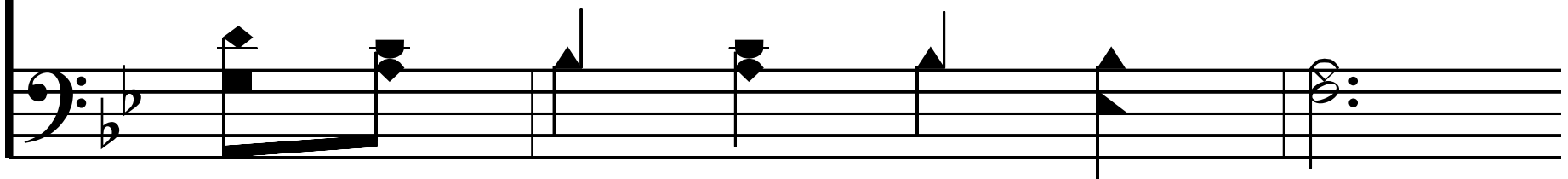
And built the loft - y skies.



I sing the wis-dom that or - dained



The sun to rule the day;



The moon shines full at His com-mand,

This system contains two staves of music. The upper staff is in treble clef and the lower staff is in bass clef. Both staves are in a key signature of one flat (B-flat). The melody in the treble staff consists of quarter notes and eighth notes, with some beamed eighth notes. The bass staff provides a simple accompaniment with quarter notes and eighth notes. The lyrics are centered between the two staves.

*rit.*  
And all the stars o - bey.

This system also contains two staves of music in the same key signature. The upper staff begins with a *rit.* (ritardando) marking. The melody in the treble staff features a half note followed by quarter notes and eighth notes. The bass staff continues with a simple accompaniment. The lyrics are centered between the staves.

A - - - - - men.